

» CLOSE-IN EASTSIDE RETAIL/RESTAURANT OPPORTUNITIES «

GRAND + BELMONT

FOR LEASE IN PORTLAND, OREGON



LOCATION

SE Grand Avenue & Belmont Street (SE corner)
in Portland, Oregon 97214

AVAILABLE SPACE

1,155 RSF – 4,516 RSF

RENTAL RATE

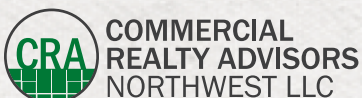
\$30.00 – \$34.00/SF/YR plus NNN

TRAFFIC COUNTS

SE Grand Avenue – 26,091 ADT ('22)
SE Belmont Street – 12,938 ADT ('22)
SE Morrison Street – 23,986 ADT ('22)

HIGHLIGHTS

- New, mixed use project in Portland's central eastside (131 market rate apartments above ground floor retail).
- Excellent opportunity for coffee/café operator to occupy prime 1,155 SF corner space with direct connection to building lobby and conference room.
- Opportunities for space fronting SE Grand Avenue, including corner of Grand & Yamhill, ideal for restaurant, retail/service retail.
- Retail features large glass storefronts, high (15') ceilings and incredible visibility and signage.
- Notable area tenants include: Afuri Ramen, Kachka, Loyal Legion, Trifecta Tavern, Voicebox Karaoke, and just steps from the "Goat Blocks" mixed use redevelopment including Market of Choice, among others.
- Available Now!

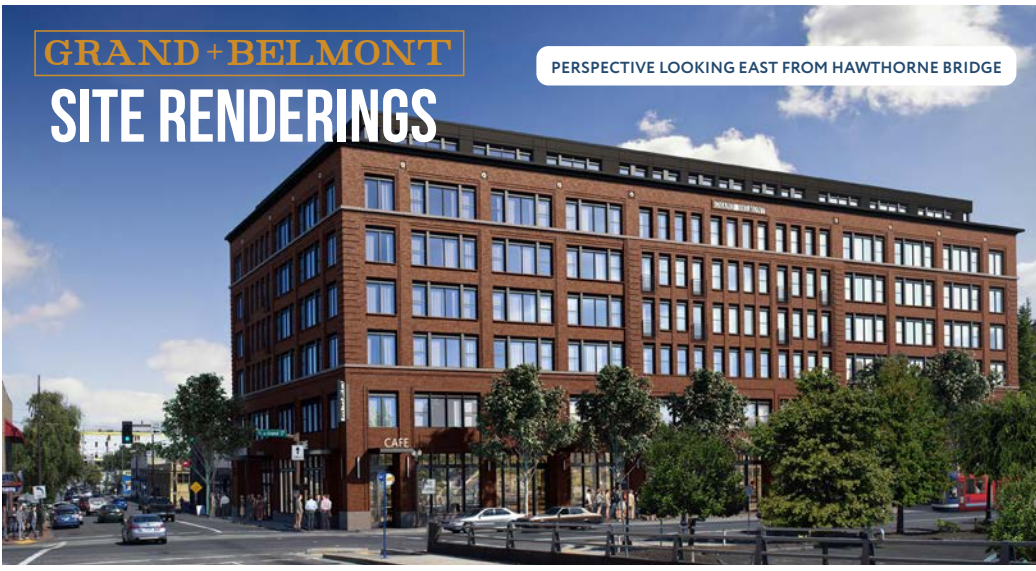


Kathleen Healy 503.880.3033 | kathleen@cra-nw.com
Ashley Heichelbech 503.490.7212 | ashley@cra-nw.com

503.274.0211
www.cra-nw.com

GRAND + BELMONT SITE RENDERINGS

PERSPECTIVE LOOKING EAST FROM HAWTHORNE BRIDGE



PERSPECTIVE LOOKING WEST AT THE CORNER CAFE OPPORTUNITY



PERSPECTIVE LOOKING NORTH ON SE GRAND AVENUE



PERSPECTIVE LOOKING AT THE SW CORNER FROM GRAND



RESTAURANT RENDERING



RESTAURANT RENDERING



GRAND + BELMONT

514 SE BELMONT STREET

PORTLAND, OR

Martin Luther King Jr Blvd

SEC Grand Ave (22) (D) V 160'92

(22) (D) V 983'52

23,986 ADT (22)
SE Morrison Bridge

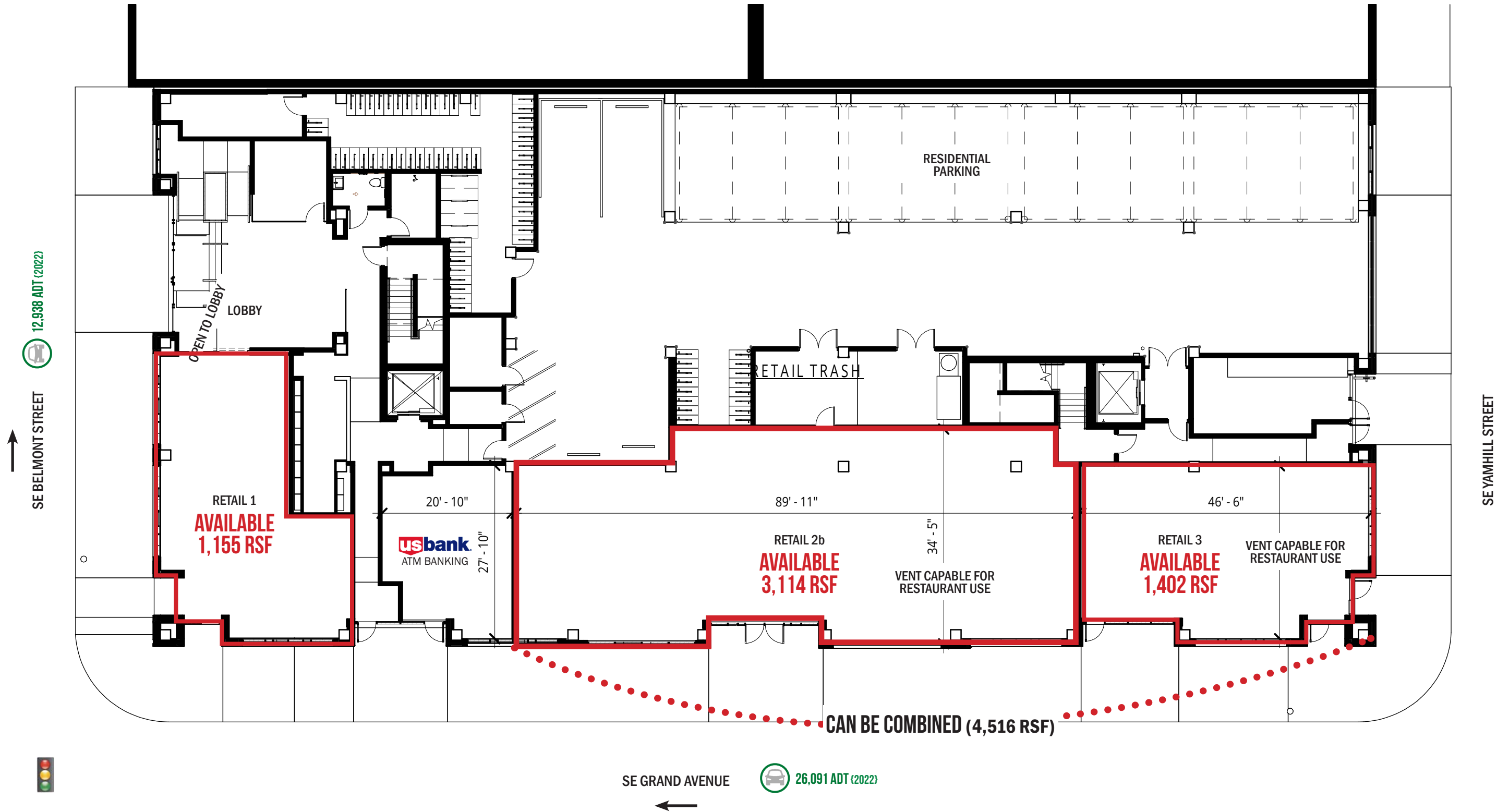
15,094 ADT (22)
SE Morrison St

SITE

MODERA BELMONT
MIXED-USE REDEV

GOAT BLOCKS
MIXED-USE
REDEVELOPMENT





GRAND + BELMONT

514 SE BELMONT STREET
PORTLAND, OR

DEMOGRAPHIC SUMMARY

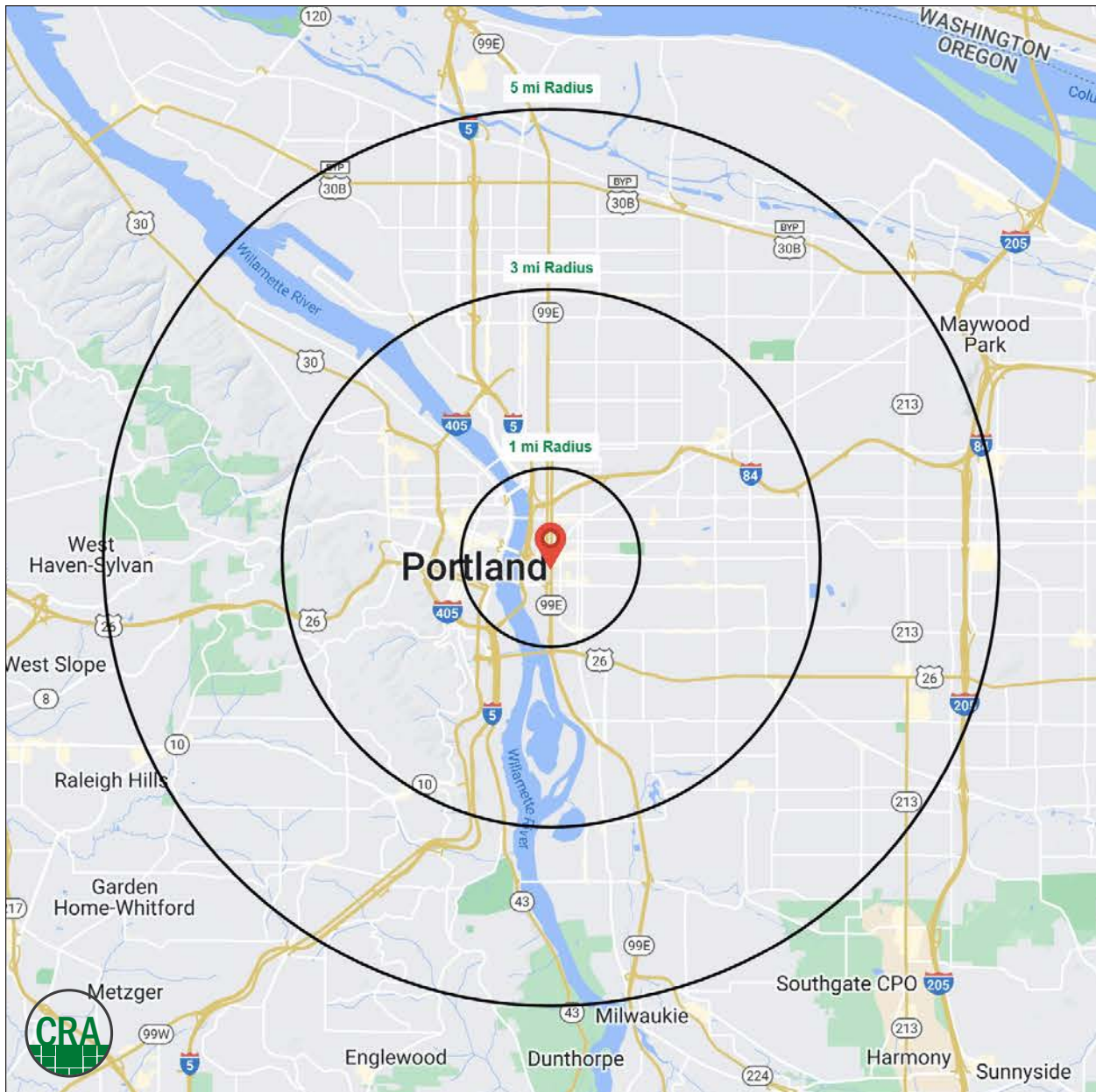
Source: Regis - SitesUSA (2022)	1 MILE	3 MILE	5 MILE
Estimated Population 2022	23,187	218,453	455,078
Projected Population 2027	24,363	224,017	467,254
Average HH Income	\$70,212	\$112,454	\$115,333
Median Home Value	\$618,898	\$625,293	\$568,473
Daytime Demographics 16+	94,985	309,777	478,241
Some College or Higher	83.6%	87.2%	83.9%

36.5

Median Age
1 MILE RADIUS

\$618,898

Median Home Value
1 MILE RADIUS



Summary Profile

2010-2020 Census, 2022 Estimates with 2027 Projections
 Calculated using Weighted Block Centroid from Block Groups



Lat/Lon: 45.5164/-122.6605

514 SE Belmont St	1 mi	3 mi	5 mi
Portland, OR 97214	radius	radius	radius
Population			
2022 Estimated Population	23,187	218,453	455,078
2027 Projected Population	24,363	224,017	467,254
2020 Census Population	23,185	220,673	459,532
2010 Census Population	16,712	182,675	403,788
Projected Annual Growth 2022 to 2027	1.0%	0.5%	0.5%
Historical Annual Growth 2010 to 2022	3.2%	1.6%	1.1%
2022 Median Age	36.5	38.1	38.2
Households			
2022 Estimated Households	13,545	112,938	212,144
2027 Projected Households	14,392	117,199	220,825
2020 Census Households	13,580	113,532	212,888
2010 Census Households	9,065	91,671	183,844
Projected Annual Growth 2022 to 2027	1.3%	0.8%	0.8%
Historical Annual Growth 2010 to 2022	4.1%	1.9%	1.3%
Race and Ethnicity			
2022 Estimated White	74.7%	76.9%	75.0%
2022 Estimated Black or African American	4.5%	4.3%	5.0%
2022 Estimated Asian or Pacific Islander	6.5%	7.1%	7.9%
2022 Estimated American Indian or Native Alaskan	1.1%	0.7%	0.7%
2022 Estimated Other Races	13.2%	11.0%	11.4%
2022 Estimated Hispanic	15.5%	10.0%	10.2%
Income			
2022 Estimated Average Household Income	\$70,212	\$112,454	\$115,333
2022 Estimated Median Household Income	\$64,095	\$87,271	\$89,017
2022 Estimated Per Capita Income	\$42,206	\$58,616	\$54,133
Education (Age 25+)			
2022 Estimated Elementary (Grade Level 0 to 8)	1.3%	1.2%	2.1%
2022 Estimated Some High School (Grade Level 9 to 11)	2.9%	2.0%	2.3%
2022 Estimated High School Graduate	12.1%	9.7%	11.7%
2022 Estimated Some College	19.4%	15.4%	16.9%
2022 Estimated Associates Degree Only	3.7%	5.0%	6.0%
2022 Estimated Bachelors Degree Only	37.1%	37.5%	35.0%
2022 Estimated Graduate Degree	23.3%	29.2%	26.1%
Business			
2022 Estimated Total Businesses	7,117	24,767	38,469
2022 Estimated Total Employees	88,735	251,992	359,772
2022 Estimated Employee Population per Business	12.5	10.2	9.4
2022 Estimated Residential Population per Business	3.3	8.8	11.8

For more information, please contact:

ASHLEY HEICHELBECH 503.490.7212 | ashley@cra-nw.com

KATHLEEN HEALY 503.880.3033 | kathleen@cra-nw.com



KNOWLEDGE

RELATIONSHIPS

EXPERIENCE



**COMMERCIAL
REALTY ADVISORS
NORTHWEST LLC**

Licensed brokers in Oregon & Washington

 15350 SW Sequoia Parkway, Suite 198 • Portland, Oregon 97224



www.cra-nw.com



503.274.0211

The information herein has been obtained from sources we deem reliable. We do not, however, guarantee its accuracy. All information should be verified prior to purchase/leasing. View the Real Estate Agency Pamphlet by visiting our website, www.cra-nw.com/home/agency-disclosure.html. CRA PRINTS WITH 30% POST-CONSUMER, RECYCLED-CONTENT MATERIAL.